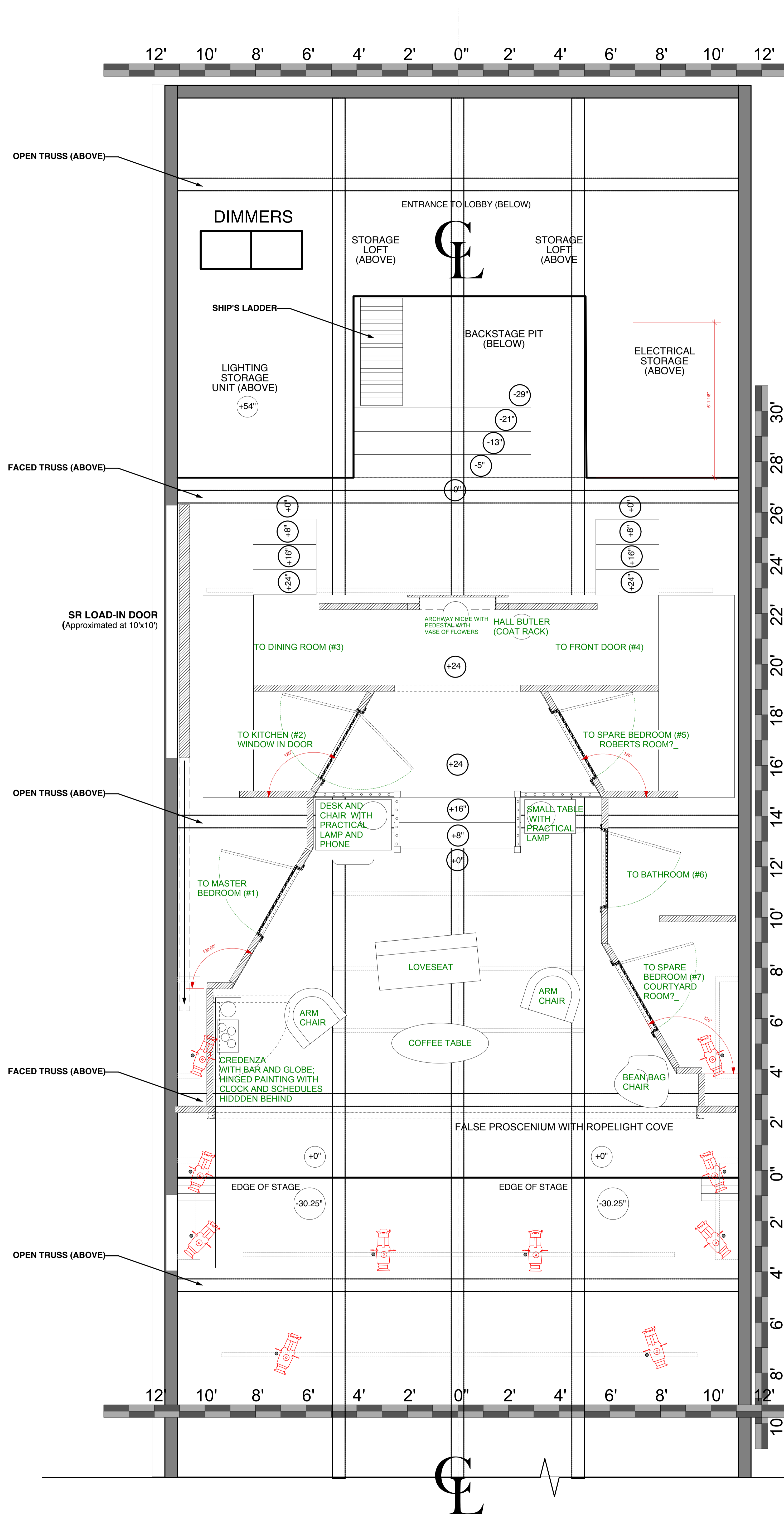
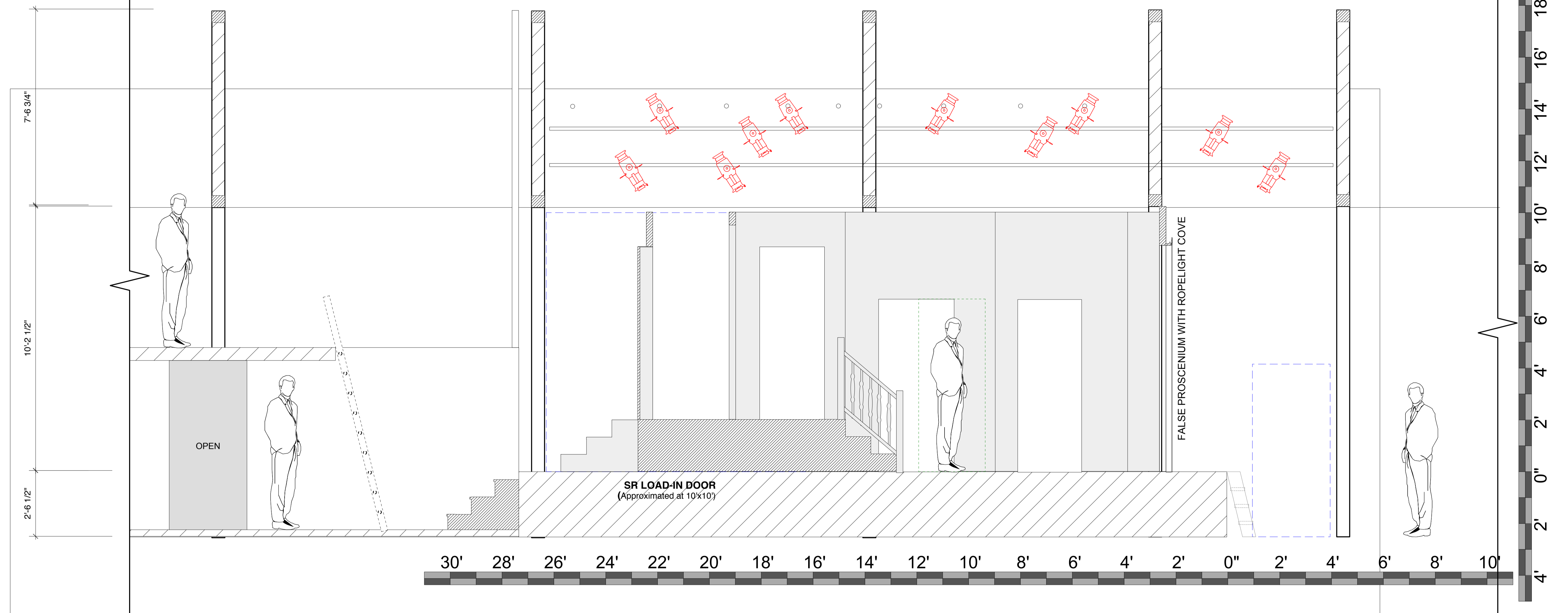


NOTE: SINCE WE WILL BE USING STOCK DOORS, DOOR WIDTHS MAY VARY FROM WHAT IS SHOWN HERE, FROM 2' WIDE TO 3' WIDE, BUT ALL DOOR HEIGHTS WILL BE 6'8".

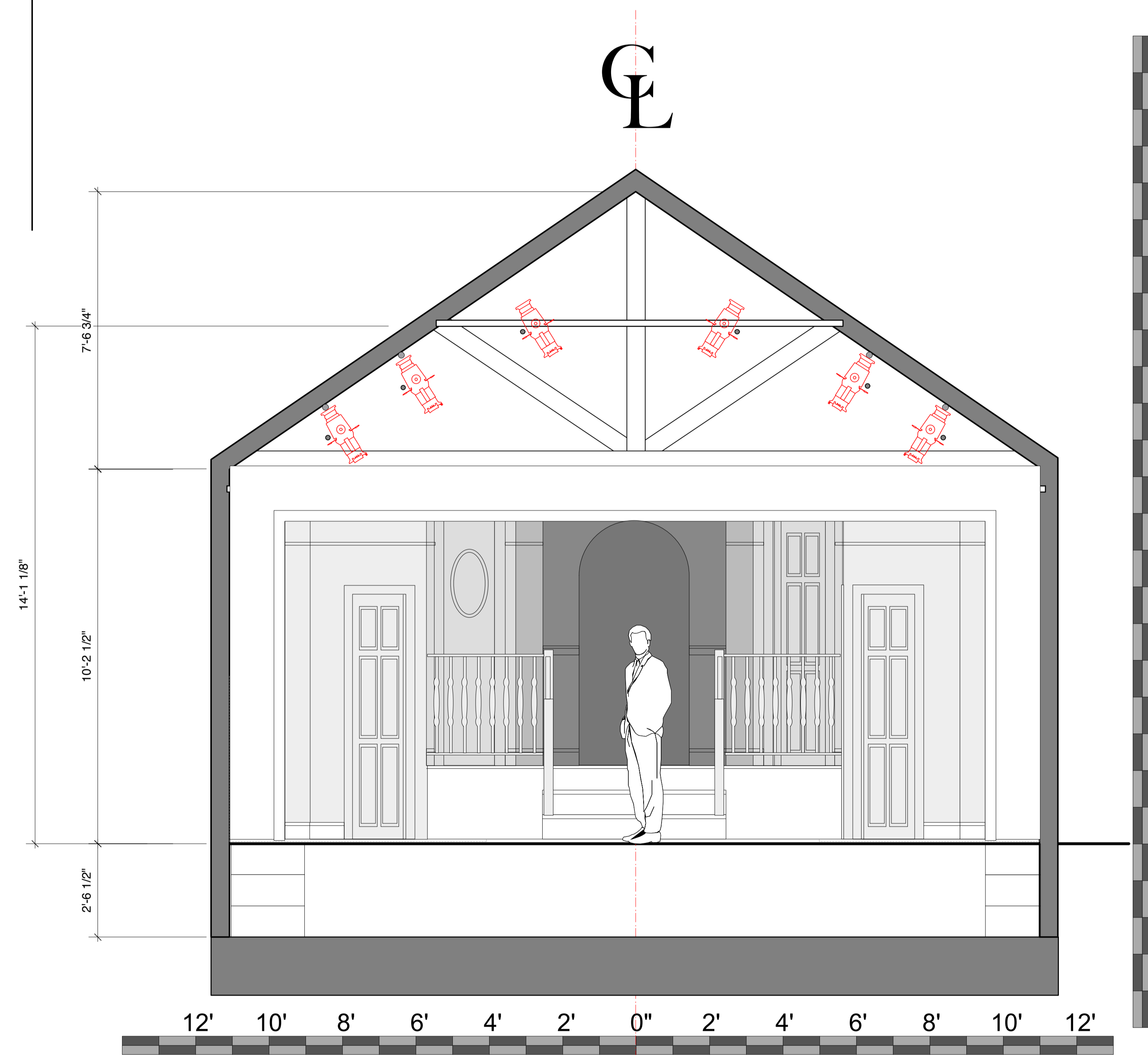


NOTE: SINCE WE WILL BE USING STOCK DOORS, DOOR WIDTHS MAY VARY FROM WHAT IS SHOWN HERE, FROM 2' WIDE TO 3' WIDE, BUT ALL DOOR HEIGHTS WILL BE 6'8".

NOTE: SINCE WE WILL BE USING STOCK DOORS, DOOR WIDTHS MAY VARY FROM WHAT IS SHOWN HERE, FROM 2' WIDE TO 3' WIDE, BUT ALL DOOR HEIGHTS WILL BE 6'8".



CENTERLINE SECTION



FRONT ELEVATION

NOTES:

WALLS
WALLS WILL BE PAINTED. WALLS HEIGHTS VARY. WHENEVER POSSIBLE SET PIECES WERE DESIGNED TO UTILIZE EXISTING STOCK.

FLOORS
ALL VISIBLE FLOORS WILL BE PAINTED. SO A CLEAN, FLAT SERVICE IS REQUIRED. FLOOR WILL BE PAINTED BY DESIGNER. SOME AREAS WILL BE FADED/SPRAYED TO BLACK.


MOULDINGS
ALL TRIM WILL BE PAINTED--NOT STAINED. SEE FULL SCALE DRAWINGS FOR DETAIL. (TO DISCUSS WITH DESIGNER)

BASEBOARD, CHAIR RAIL & CAP WILL BE SIMPLE PROFILES TAKEN FROM STOCK MATERIALS. (HOPEFULLY)

STEPS
ALL STEPS AND PLATFORMS WILL REQUIRE NOSING DETAIL.

LIGHTING
THERE IS FALSE PROSCENIUM FOR THE SHOW WITH COVE FOR ROPE LIGHTING (WE HAVE THE ROPE LIGHT IN STOCK FROM AN EARLIER SHOW I DESIGNED.)

NOTE: SINCE WE WILL BE USING STOCK DOORS, DOOR WIDTHS MAY VARY FROM WHAT IS SHOWN HERE, FROM 2' WIDE TO 3' WIDE, BUT ALL DOOR HEIGHTS WILL BE 6'8".

THE DEPOT THEATRE		
BOEING, BOEING		
A 60's FARCE		
SHEET 1		DIRECTOR: J. CHRIS JONES
DRAWING: GROUNDPLAN & CLS		SCENIC DESIGN: JONATHAN WENTZ
DATE: REVISED 7/10/13 (DRAFT 2)		SCALE: 1'-0" = 1/2"